



Systems for **resin**
and **cementitious flooring**

MAPEFLOOR SYSTEM
ULTRATOP SYSTEM





SELECTION TABLE FOR CEMENTITIOUS AND RESIN FLOORING INSTALLATION

TRAFFIC				CHEMICAL RESISTANCE				TYPE								THICKNESS	EPOXY RESIN	POLYURETHANE RESIN	POLYURETHANE CEMENT	CEMENTITIOUS
LIGHT	LIGHT TO MEDIUM	MEDIUM TO HEAVY	HEAVY	VERY HIGH	HIGH	NORMAL	LOW	DUST-REPELLENT	PAINT	MULTI-LAYER	SELF-LEVELLING	RESIN-BASED MORTAR	SCREEDS	DRY SCREED	TROWELLED	DECORATIVE				
	●				●					●							from 0.8 to 1.2 mm	●		
		●			●					●							from 3 to 3.5 mm	●		
		●			●						●						from 2 to 4 mm	●		
●					●				●								from 0.6 to 1 mm	●		
	●						●			●							approx. 3 mm	●		
		●					●			●							approx. 5 mm	●		
		●					●				●						approx. 4 mm	●		
	●					●		●									from 60 to 100 µm		●	
		●				●									●	●	from 1,5 to 3 mm	●		
		●			●								●				from 6 to 15 mm	●		
		●			●					●							from 3 to 3.5 mm		●	
			●		●						●						from 3 to 4 mm			●
			●	●								●					from 6 to 9 mm			●
	●						●				●						from 5 to 40 mm			●
●							●				●				●		from 10 to 40 mm			●
●							●								●		from 15 to 40 mm			●

KEY

(*) **MAPEFLOOR SYSTEMS** that may be coloured using **MAPECOLOR PASTE**, concentrated coloured paste for colouring the neutral base products of the systems

⚠️ **N.B. MAPEFLOOR FILLER** must never be added to **MAPEFLOOR FINISH 52 W** when used on either anthracite or red **ULTRATOP**

N.B. - THIS TABLE IS MERELY INDICATIVE; FOR FURTHER INFORMATION, REFER TO THE TECHNICAL DATA SHEET FOR EACH PRODUCT

CEMENTITIOUS AND RESIN FLOORING SYSTEMS	PRODUCTS TO BE USED IN THE VARIOUS SYSTEMS																									
	PRIMER				RESINS							CEMENTITIOUS MORTAR	FINISH						AGGREGATES							
	PRIMER SN	PRIMER G	MAPEPRIM SP	MAPECOAT I 600 W	MAPEFLOOR I 300 SL	MAPEFLOOR I 500 W	MAPEFLOOR DECOR 700	MAPEFLOOR I 900	MAPEFLOOR CPU/MF	MAPEFLOOR CPU/HD	MAPEFLOOR PU 400	MAPEFLOOR PU 410	ULTRATOP	MAPECOAT I 620 W	MAPEFLOOR FINISH 50	MAPEFLOOR FINISH 51	MAPEFLOOR FINISH 52 W	KERASEAL	MAPELUX LUCIDA	MAPELUX OPACA	MAPEFLOOR FILLER	DYNASTONE COLOR	QUARTZ 0.25	QUARTZ 0.5	QUARTZ 1.2	QUARTZ 1.9
MAPEFLOOR SYSTEM 31 (*)	●				●																※※	●	●			
MAPEFLOOR SYSTEM 32 (*)	●				●																※※	●	●			
MAPEFLOOR SYSTEM 33 (*)	●				●												●			□	□	※※	●	●		
MAPEFLOOR SYSTEM 34 (*)					●																	※※				
MAPEFLOOR SYSTEM 51 (*)						●																※※		●		
MAPEFLOOR SYSTEM 52 (*)						●																※※		●		
MAPEFLOOR SYSTEM 53 (*)				●		●									●	●		●		□	□	※※		●		
MAPEFLOOR SYSTEM PU 65 (*)																●						※※				
DECOR SYSTEM 70 (*)	●						●									●		●		□	□	※※		●		
MAPEFLOOR SYSTEM 91 (*)	●				●			●														※※	●	●		●
MAPEFLOOR PARKING SYSTEM (*)	●										●	●					●						●	●		
MAPEFLOOR SYSTEM CPU/MF	●								●															●		
MAPEFLOOR SYSTEM CPU/HD										●																
ULTRATOP SYSTEM NATURAL	●	■	▲										●	●	●		●		□	□	※※				●	
ULTRATOP SYSTEM POLISHED	●	■	▲										●		●		●	●	□	□	※※				●	
ULTRATOP SYSTEM TERRAZZO	●	■											●					●	□	□		●			●	

- Primer to be used on cementitious substrates as an alternative to **PRIMER SN**
- ▲ Primer to be used on ceramic and natural stone substrates as an alternative to **PRIMER SN**

- The various alternative finishing products must be used according to the strength characteristics required and the aesthetic effect required
- Products required for each system and their relative properties
- Metallic waxes to be used in alternation, according to the aesthetic effect required

SYSTEMS FOR RESIN AND CEMENTITIOUS FLOORING

In the resin and cementitious-based flooring sector, Mapei have developed a wide range of technologically advanced systems which offer high standards of quality for each specific area of use, including public, private, industrial and civil applications. These standards are a guarantee for the final user of their characteristics of functionality, ease of maintenance and an attractive finish.

Mapei’s research laboratories have developed two main product groups: **Mapefloor System**, a complete range of epoxy and polyurethane systems, and **Ultratop System**, a self-levelling, quick-setting and quick-hardening cementitious system which, thanks to its versatility, may be used for installing both industrial and civil floors in a wide range of environments.

INDEX

p. 3	Mapefloor System 31
p. 3	Mapefloor System 32
p. 4	Mapefloor System 33
p. 4	Mapefloor System 34
p. 5	Mapefloor System 51
p. 5	Mapefloor System 52
p. 6	Mapefloor System 53
p. 6	Decor System 70
p. 7	Mapefloor System 91
p. 7	Mapefloor System PU 65
p. 8	Mapefloor Parking System
p. 8	Mapefloor CPU/MF
p. 9	Mapefloor CPU/HD
p. 9	Mapefloor I 320 SL CONCEPT
p. 10	“Natural effect” Ultratop System
p. 10	“Polished effect” Ultratop System
p. 11	“Terrazzo alla Veneziana effect” Ultratop System
p. 12	References
p. 18	Selection table for cementitious and resin flooring installation
p. 20	Colour chart

Mapecolor System 31

Non-slip, multi-layered epoxy system, applied at a thickness from 0.8 to 1.2 mm, for floors with a vapour barrier subject to medium/light traffic and where high chemical resistance is required.

Products required:

Primer SN
Mapecolor I 300 SL
Mapecolor Paste
Quartz 0.5
Quartz 0.25

Mapei solution

Prepare the substrate by grinding or shot blasting, to guarantee the best performance of the **MAPEFLOOR SYSTEM 31** epoxy system. Any defects present, such as holes, pitting, cracking, etc. must be repaired beforehand using either **EPORIP**, **PRIMER SN** or **MAPEFLOOR I 300 SL**, according to the width and depth of the defects and cracks. Where required, consolidation operations must be carried out using **PRIMER MF** or **PRIMER EP**. If there are either large hollows or highly deteriorated areas present, they must be repaired using **MAPEFLOOR EP19**, or with one of the products from the **MAPEGROUT** range (e.g. **MAPEGROUT SV**).

Spread **PRIMER SN** mixed with **MAPECOLOR PASTE** and 4 kg of **QUARTZ 0.5** onto the substrate. Pour the product as mixed on the floor to be covered, and spread it out evenly using either a finishing trowel or smooth rake. While the product is still fresh, fully sprinkle on a layer of **QUARTZ 0.5**.

Once the **PRIMER SN** has hardened, **remove** excess sand and dust with a vacuum cleaner.

Apply **MAPEFLOOR I 300 SL**, specially prepared by adding **MAPECOLOR PASTE** and 0.5 kg of **QUARTZ 0.25**. Spread on evenly and continuously using a medium-haired roller, making sure that the roller strokes cross over each other to obtain a defect-free surface.



3

Mapecolor System 32

Non-slip, multi-layered epoxy system applied at a thickness from 3 to 3.5 mm, for floors with a vapour barrier subject to medium to heavy traffic and where high chemical resistance is required.

Products required:

Primer SN
Mapecolor I 300 SL
Mapecolor Paste
Quartz 0.5
Quartz 0.25

Mapei solution

Prepare the substrate by shot blasting or grinding, to guarantee the best performance of the **MAPEFLOOR SYSTEM 32** epoxy system. Any defects present, such as holes, pitting, cracking, etc. must be repaired beforehand using either **EPORIP**, **PRIMER SN** or **MAPEFLOOR I 300 SL**, according to the width and depth of the defects and cracks. Where required, consolidation operations must be carried out using **PRIMER MF** or **PRIMER EP**. If there are either large hollows or highly deteriorated areas present, they must be repaired using **MAPEFLOOR EP19**, or with one of the products from the **MAPEGROUT** range (e.g. **MAPEGROUT SV**).

Spread **PRIMER SN** mixed with **MAPECOLOR PASTE** and 4 kg of **QUARTZ 0.5** onto the substrate. Pour the product as mixed on the floor to be covered, and spread it out evenly using either a finishing trowel or smooth rake. While the product is still fresh, fully sprinkle on a layer of **QUARTZ 0.5**.

Once the **PRIMER SN** has hardened, **remove** excess sand with a vacuum cleaner.

Apply an intermediate layer of **MAPEFLOOR I 300 SL**, prepared by adding **MAPECOLOR PASTE** and 3 kg of **QUARTZ 0.5**. Spread the product as mixed evenly on the previous layer using either a finishing trowel or a smooth rake. While the product is still fresh, fully sprinkle on a layer of **QUARTZ 0.5**.

Once the layer has hardened, **remove** excess sand with a vacuum cleaner, sand the surface and then remove all dust. Finish off using **MAPEFLOOR I 300 SL** specially prepared by adding **MAPECOLOR PASTE** and 0.5 kg of **QUARTZ 0.25**.

Apply the mix uniformly and continuously using a medium-haired roller, making sure that the roll strokes cross over each other to obtain a defect-free surface.



Mapefloor System 33

Self-levelling, solvent-free epoxy system applied at a thickness from 2 to 4 mm for floors with a vapour barrier, for shopping centres, aseptic rooms, the food industry and in all those applications where work surfaces are not subject to frequent wetting.

Products required:

Primer SN **Mapelux Lucida** or **Mapelux Opaca**
Mapefloor I 300 SL **(Mapefloor Filler)**
Mapecolor Paste
Quartz 0,5
Quartz 0,25

Mapei solution

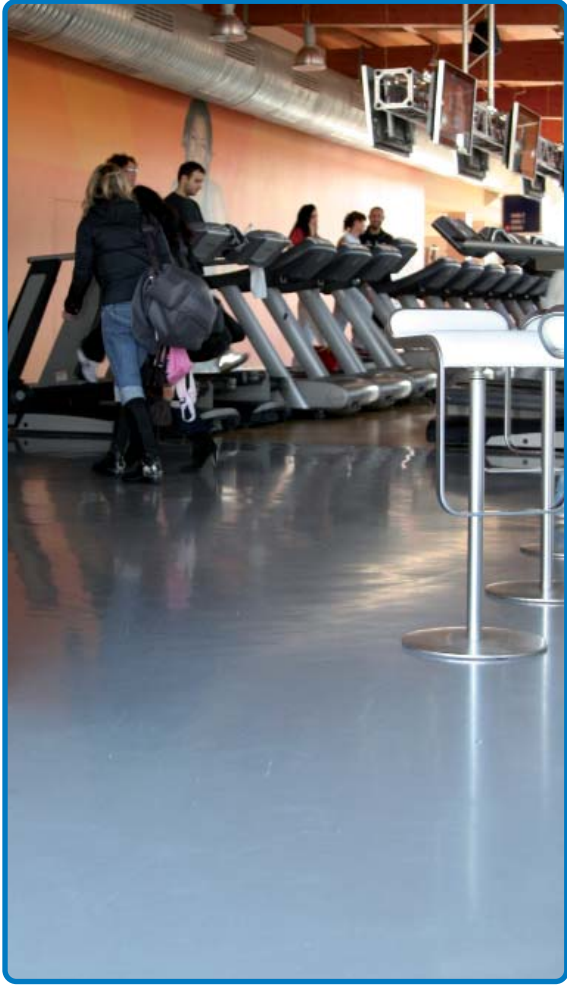
Prepare the substrate by shot blasting or grinding, to guarantee the best performance of the **MAPEFLOOR SYSTEM 33** epoxy system. Any defects present, such as holes, pitting, cracking, etc. must be repaired beforehand using either **EPORIP**, **PRIMER SN** or **MAPEFLOOR I 300 SL**, according to the width and depth of the defects and cracks. Where required, consolidation operations must be carried out using **PRIMER MF** or **PRIMER EP**. If there are either large hollows or highly deteriorated areas present, they must be repaired using **MAPEFLOOR EP19**, or with one of the products from the **MAPEGROUT** range (e.g. **MAPEGROUT SV**).

Spread **PRIMER SN** mixed with 4 kg of **QUARTZ 0.5** on the substrate. Pour the product as mixed on the floor to be covered, and spread it out evenly using either a finishing trowel or a smooth rake. While the product is still fresh, spread **QUARTZ 0.5** on the surface. If the surface is still porous after the first coat of primer, apply further smoothing layers of **PRIMER SN**, and a light sprinkling of **QUARTZ 0.5**.

Once the **PRIMER SN** has hardened, **remove** excess sand with a vacuum cleaner.

Finish off using **MAPEFLOOR I 300 SL**, specially prepared by adding **MAPECOLOR PASTE** and a maximum of 8 kg of **QUARTZ 0.25**. Spread the product as mixed evenly on the previous layer using either a finishing trowel or a "V" notched serrated rake. While the product is still fresh, immediately pass over the surface with a spike roller, to help completely eliminate any air entrapped in the product. If an opaque, slightly non-slip finish is required, the surface may be painted over within 24 hours using **MAPEFLOOR FINISH 51**, two-component, aliphatic polyurethane compound at a rate of 0.1 kg/m². It is also possible to increase the non-slip effect by adding 5-10% by weight of **MAPEFLOOR FILLER** to the **MAPEFLOOR FINISH 51**.

For civil applications, we recommend treating the floor with either metallic **MAPELUX LUCIDA** or **MAPELUX OPACA** wax.



Mapefloor System 34

Anti-dust and anti-oil epoxy treatment, obtained by painting at a thickness from 0.6 to 1 mm, on industrial floors with a vapour barrier.

Products required:

Mapefloor I 300 SL
Mapecolor Paste
(Mapefloor Filler)

Mapei solution

Prepare the substrate by sanding with a carborundum or a suitable abrasive disc, and remove residual dust with a vacuum cleaner. Any defects present, such as holes, pitting, cracking, etc. must be repaired beforehand using either **EPORIP**, **PRIMER SN** or **MAPEFLOOR I 300 SL**, according to the width and depth of the defects and cracks. Where required, consolidation operations must be carried out using **PRIMER MF** or **PRIMER EP**. If there are either large hollows or highly deteriorated areas present, they must be repaired using **MAPEFLOOR EP19**, or with one of the products from the **MAPEGROUT** range (e.g. **MAPEGROUT SV**).

Apply a first coat of **MAPEFLOOR I 300 SL**, specially prepared by adding **MAPECOLOR PASTE**. Apply the mix uniformly and continuously using a medium-haired roller, making sure that the roll strokes cross over each other to obtain a defect-free surface.

Finish off with a second coat of **MAPEFLOOR I 300 SL**, specially prepared by adding **MAPECOLOR PASTE**. Apply the mix uniformly and continuously using a medium-haired roller, making sure that the roll strokes cross over each other to obtain a defect-free surface. If a slightly non-slip finish is required, add 5-10% by weight of **MAPEFLOOR FILLER** to the final coat of **MAPEFLOOR I 300 SL**.



Mapecolor System 51

Non-slip, multi-layered epoxy system applied at an average thickness of 3 mm, also suitable for floors without a vapour barrier subject to medium-light traffic and where only low chemical resistance is required.

Products required:

Mapecolor I 500 W

Mapecolor Paste

Quartz 0.5

Mapecolor solution

Preparation of the substrate by shot blasting. Any defects present, such as holes, pitting, cracking, etc. must be repaired beforehand using either [EPORIP](#), [PRIMER SN](#) or [MAPEFLOOR I 500 W](#), according to the width and depth of the defects and cracks. Where required, consolidation operations must be carried out using [MAPECOAT I 600 W](#). If there are either large hollows or highly deteriorated areas present, they must be repaired using [MAPEFLOOR EP19](#), or with one of the products from the [MAPEGROUT](#) range (e.g. [MAPEGROUT SV](#)). Before applying the product, wet the surface to be treated, taking care not to form puddles or to leave standing water.

Spread [MAPEFLOOR I 500 W](#) on the substrate as a primer, mixed with [MAPECOLOR PASTE](#) and 2 litres of water. Pour the mix as prepared onto the floor to be covered, and spread it out evenly and uniformly using a finishing trowel or a notched rake. While the product is still fresh, fully sprinkle on a layer of [QUARTZ 0.5](#).

Once the [MAPEFLOOR I 500 W](#) has hardened, **remove** excess sand using an industrial vacuum cleaner, sandpaper the surface and remove residual dust with a vacuum cleaner.

Finish off using [MAPEFLOOR I 500 W](#), specially prepared by adding [MAPECOLOR PASTE](#) and 2 litres of water. Lay the product uniformly and continuously using a finishing trowel or a smooth rake, and where required, pass over the surface with a medium-haired roller to create an even more uniform finish.



5

Mapecolor System 52

Non-slip, multi-layered epoxy system applied at an average thickness of 5 mm, also suitable for floors without a vapour barrier subject to medium-heavy traffic, and where only low chemical resistance is required.

Products required:

Mapecolor I 500 W

Mapecolor Paste

Quartz 0.5

Mapecolor solution

Prepare the substrate by shot blasting, being careful to not go too deep down into the substrate. Any defects present, such as holes, pitting, cracking, etc. must be repaired beforehand using either [EPORIP](#), [PRIMER SN](#) or [MAPEFLOOR I 500 W](#), according to the width and depth of the defects and cracks. Where required, consolidation operations must be carried out using [MAPECOAT I 600 W](#). If there are either large hollows or highly deteriorated areas present, they must be repaired using [MAPEFLOOR EP19](#), or with one of the products from the [MAPEGROUT](#) range (e.g. [MAPEGROUT SV](#)). Before applying the product, wet the surface to be treated, taking care not to form puddles or to leave standing water.

Spread [MAPEFLOOR I 500 W](#) on the substrate as a primer, mixed with [MAPECOLOR PASTE](#) and 2 litres of water. Pour the mix onto the floor to be covered, and spread it out evenly and uniformly using a finishing trowel or a notched rake. While the product is still fresh, fully sprinkle on a layer of [QUARTZ 0.5](#).

Once the [MAPEFLOOR I 500 W](#) has hardened, **remove** excess sand using an industrial vacuum cleaner.

Apply an intermediate layer of [MAPEFLOOR I 500 W](#), prepared by adding [MAPECOLOR PASTE](#) and 2 litres of water. Lay the product as mixed evenly on the layer prepared previously, using a finishing trowel or a notched rake. While the product is still fresh, fully sprinkle on a layer of [QUARTZ 0.5](#).

Once hardened, **remove** excess sand using an industrial vacuum cleaner, sandpaper the surface and remove residual dust with a vacuum cleaner.

Finish off with [MAPEFLOOR I 500 W](#), specially prepared by adding [MAPECOLOR PASTE](#) and 2 litres of water. Lay the product uniformly and continuously using a finishing trowel or a smooth rake, and where required pass over the surface with a medium-haired roller to create an even more uniform surface.



Mapecolor System 53

Self-levelling, solvent-free epoxy system applied at an average thickness of 4 mm, also suitable for floors without a vapour barrier in shopping centres, aseptic rooms, the food industry and the pharmaceutical industry.

Products required:

Mapecoat I 600 W
Mapecolor Paste
Quartz 0.5
Mapelux Lucida or Mapelux Opaca
(Mapecolor Filler)

Mapei solution

Prepare the substrate by shot blasting, being careful to not go too deep down into the substrate. Any defects present, such as holes, pitting, cracking, etc. must be repaired beforehand using either **EPORIP**, **PRIMER SN** or **MAPEFLOOR I 500 W**, according to the width and depth of the defects and cracks. Where required, consolidation operations must be carried out using **MAPECOAT I 600 W**. If there are either large hollows or highly deteriorated areas present, they must be repaired using **MAPEFLOOR EP19**, or with one of the products from the **MAPEGROUT** range (e.g. **MAPEGROUT SV**). Before application, wet the surface to be treated, taking care not to form puddles or to leave standing water.

Spread **MAPECOAT I 600 W** on the substrate, diluted with water up to a maximum ratio of 1 : 1. Pour the mix onto the floor to be covered, and spread it out evenly and uniformly using a medium-haired roller. While the product is still fresh, spread on a light layer of **QUARTZ 0.5**.

Finish using **MAPEFLOOR I 500 W**, specially prepared by adding **MAPECOLOR PASTE** and 2 litres of water. Lay the product uniformly and continuously with a finishing trowel or a notched rake, and immediately pass over the surface with a spike roller to help completely eliminate any air entrapped in the product. To increase the abrasion resistance of **MAPEFLOOR SYSTEM 53**, we recommend applying a coat of **MAPEFLOOR FINISH 50** or **MAPEFLOOR FINISH 52 W**. It is also possible to give a slightly non-slip finish to the system by adding 5% by weight of **MAPEFLOOR FILLER** to the **MAPEFLOOR FINISH 50**. For civil applications, we recommend treating the floor with either metallic **MAPELUX LUCIDA** or **MAPELUX OPACA** wax.



6

Decor System 70

Creating floors with a trowelled or mottled finish in internal environments such as homes, showrooms and shops, obtained by applying a solvent-free, epoxy resin-based system.

Products required:

Primer SN
Quartz 0.5
Mapecolor Decor 700
Mapecolor Paste
Mapecolor Finish 52 W or Mapecolor Finish 50
Mapelux Lucida or Mapelux Opaca
(Mapecolor I 300 SL TRP)

Mapei solution

Prepare the substrate by shot blasting or grinding, to guarantee the best performance from the **DECOR SYSTEM 70** epoxy system. Any defects present, such as holes, pitting, cracking, etc. must be repaired beforehand using either **EPORIP** or **PRIMER SN**, according to the width and depth of the defects and cracks. Where required, consolidation operations must be carried out using **PRIMER MF** or **PRIMER EP**. If there are either large hollows or highly deteriorated areas present, they must be repaired using **MAPEFLOOR EP19**, or with one of the products from the **MAPEGROUT** range (e.g. **MAPEGROUT SV**).

Spread **PRIMER SN** mixed with **MAPECOLOR PASTE** and 4 kg of **QUARTZ 0.5** on the substrate. Pour the product as mixed on the floor to be covered, and spread it out evenly using either a finishing trowel or a smooth rake. While the product is still fresh, spread **QUARTZ 0.5** on the surface. If the surface is still porous after the first coat of primer, apply further smoothing layers of **PRIMER SN**.

Once the **PRIMER SN** has hardened, **remove** excess sand with a vacuum cleaner, sandpaper the surface and remove all remaining dust.

Finish using **MAPEFLOOR DECOR 700**, specially prepared by adding **MAPECOLOR PASTE**. Spread on the product in a number of coats and strokes with a finishing trowel to obtain the finished effect required. To improve the product's resistance to scoring, apply either **MAPEFLOOR FINISH 50** or **MAPEFLOOR FINISH 52 W** on the surface of the **MAPEFLOOR DECOR 700** within 24 hours of its application. For civil applications, we recommend treating the floor with either metallic **MAPELUX LUCIDA** or **MAPELUX OPACA** wax.

MAPEFLOOR I 300 SL TRP may be used as an alternative to the finishing products described above, at the maximum thickness of 1.5 mm, to give the surface a lens-type finish.



Mapecolor System 91

Renovation of old floors subject to medium-heavy traffic where high chemical resistance is required, by means of an epoxy mortar layer with a consistency similar to a mortar screed, applied by trowel at a thickness between 6 and 15 mm.

Products required:

Primer SN	Mapecolor PU30	Quartz 1.9
Mapecolor I 900	Mapecolor PU40	Quartz 0.5
Mapecolor I 300 SL	Mapecolor PU45	Quartz 0.25

Mapecolor solution

Prepare the substrate by milling or shot blasting, and remove residual dust with a vacuum cleaner. Any defects present, such as holes, pitting, cracking, etc. must be repaired beforehand using either **EPORIP**, **PRIMER SN** or **MAPEFLOOR I 900** mixed with **QUARTZ 0.5**, according to the width and depth of the defects and cracks. If the substrate needs to be consolidated, use either **PRIMER MF** or **PRIMER EP**. If there are either large hollows or highly deteriorated areas present, they must be repaired using **MAPEFLOOR EP 900** mixed with **QUARTZ 1.9**, or with one of the products from the **MAPEGROUT** range (e.g. **MAPEGROUT SV**).

Spread the specially prepared **PRIMER SN** on the substrate using a medium-haired roller.

The successive layers of mortar must be laid on the primer while still wet.

Apply the **MAPEFLOOR I 900** mortar with a consistency similar to a mortar screed, prepared beforehand by adding a package of resin to 180 kg of **QUARTZ 1.9**.

Spread the mix using rakes, 8 mm templates and an aluminium straight edge.

Smooth over the surface using a special vibro-compactor while the mortar is still wet.

Apply a first smoothing layer of **MAPEFLOOR I 300 SL**, prepared by adding **MAPECOLOR PASTE** and 1.8 kg of **QUARTZ 0.25**. Spread the product on the previous layer and smooth down to a feather edge with a finishing trowel or a smooth rake.

Use a clipper to cut the distribution and expansion joints, following the same layout as the existing ones. Then seal the intermediate joints using **MAPEFLEX PU45** or **MAPEFLEX PU30**. Seal the expansion joints, using **MAPEFLEX PU40**.

Apply a second smoothing layer after a maximum of 12 hours, using **MAPEFLOOR I 300 SL** prepared by adding **MAPECOLOR PASTE** and 4.8 kg of **QUARTZ 0.25**.

Spread the product and smooth off down to a feather edge using a finishing trowel or a smooth rake.

Finish using **MAPEFLOOR I 300 SL**, prepared by adding **MAPEFLOOR PASTE** and 0.8 kg of **QUARTZ 0.5**. Spread on evenly and continuously using a medium-haired roller, making sure that the roller strokes cross over each other to obtain a defect-free surface.



Mapecolor System PU 65

Anti-dust and anti-oil treatment using a solvent-free, transparent aliphatic polyurethane system which is permeable to water vapour for concrete industrial floors, or as a protective impregnator with the property of reducing the absorption and improving the abrasion resistance of **ULTRATOP**.

Products required:

Mapecolor Finish 50
Mapelux Lucida or **Mapelux Opaca**
(**Mapecolor Filler**)

Mapecolor solution

Prepare the substrate by sanding with a carborundum disc or a suitable abrasive disc, and remove residual dust with a vacuum cleaner. Any defects present, such as holes, pitting, cracking, etc. must be repaired beforehand using either **EPORIP**, **PRIMER SN** or **MAPEFLOOR I 300 SL**, according to the width and depth of the defects and cracks. Where required, consolidation operations must be carried out using **PRIMER MF** or **PRIMER EP**.

If there are either large hollows or highly deteriorated areas present, they must be repaired using **MAPEFLOOR EP19**, or with one of the products from the **MAPEGROUT** range (e.g. **MAPEGROUT SV**).

Spread on prepared **MAPEFLOOR FINISH 50** evenly and continuously using a medium/short-haired roller. During these operations, make sure that the roller strokes cross over each other to obtain a defect-free surface. It is also possible to give a slightly non-slip finish to the system by adding from 5 to 10% of **MAPEFLOOR FILLER** to the **MAPEFLOOR FINISH 50**. The treatment with **MAPEFLOOR FINISH 50** gives the surface a marked wet-look finish. For civil applications, we recommend treating the floor with either metallic **MAPELUX LUCIDA** or **MAPELUX OPACA** wax.



Mapecolor Parking System

Solvent-free, multi-layered, continuous-spread, non-slip flexible polyurethane system applied at a thickness of from 3 to 3.5 mm, for floors and elastomeric waterproofing in multi-storey car-parks subject to intense traffic.

Products used:

Primer SN

Mapecolor PU 400

Mapecolor PU 410

Mapecolor Paste

Mapecolor Finish 51

Quartz 0.25

Quartz 0.5

Mapei solution

Prepare the substrate by grinding or shot blasting to guarantee the best performance from the **MAPEFLOOR PARKING SYSTEM** polyurethane system. Any defects present, such as holes, pitting, cracking, etc. must be repaired beforehand using either **EPORIP** or **PRIMER SN**, according to the width and depth of the defects and cracks. Where required, consolidation operations must be carried out using **PRIMER MF** or **PRIMER EP**. If there are either large hollows or highly deteriorated areas present, they must be repaired using **MAPEFLOOR EP19** or with one of the products from the **MAPEGROUT** range (e.g. **MAPEGROUT SV**).

Spread **PRIMER SN** mixed with 4 kg of **QUARTZ 0.5** on the substrate. Pour the product as mixed on the floor to be covered and spread it out evenly using either a smooth trowel or a smooth rake. While the product is still fresh, fully sprinkle on a layer of **QUARTZ 0.5**.

Remove excess sand with a vacuum cleaner once the **PRIMER SN** has hardened.

Apply a flexible intermediate layer of **MAPEFLOOR PU 400** prepared by adding **MAPECOLOR PASTE** and 20-30% by weight of **QUARTZ 0.25**. Spread the mix evenly on the previous layer using a notched trowel, and while the product is still fresh, pass over the surface with a spike roller. Sprinkle on a thin layer of **QUARTZ 0.5**.

Apply a medium-flexibility intermediate layer of **MAPEFLOOR PU 410** prepared by adding **MAPECOLOR PASTE** (1.4 kg of **MAPECOLOR PASTE** for each confection of **MAPEFLOOR PU 410**) and 30% by weight of **QUARTZ 0.25**. Spread the mix evenly on the previous layer using a smooth trowel, and while the product is still fresh, pass over the surface with a spike roller. Saturate the product as soon as it has been applied with 0.1-0.5 mm or 0.3-0.9 mm quartz sand, according to the degree of non-slip finish required.

Remove any excess sand with a vacuum cleaner once the **MAPEFLOOR PU 410** has hardened, sand the surface and remove the dust with a vacuum cleaner.

Finish the surface with **MAPEFLOOR FINISH 51**, prepared by adding **MAPECOLOR PASTE**. Spread on evenly and continuously using a smooth rake followed by a medium-haired roller, making sure that the roller strokes criss-cross over each other to obtain a more even surface.



Mapecolor CPU/MF

Polyurethane cement-based system formulated with high resistance to chemicals, applied at a thickness from 3 to 4 mm. Ideal for floors in the chemical industry, pharmaceutical and food industry (sugar processing and mineral water bottling plants), the textiles industry and in the water treatment sector.

Products required:

Primer SN

Quartz 0.5

Mapecolor CPU/MF

Mapei solution

Prepare the substrate by heavy-gauge shot blasting or milling and the creation of grooves close to and around the vertical elements and, if present, any drainage holes. Mark out a diagonal line on the surface of the floor to be dressed, and cut along the line to a depth of approximately 2 cm. Remove residual dust with a vacuum cleaner.

Spread **PRIMER SN** mixed at a ratio of 1:0.4 with **QUARTZ 0.5** on the substrate using a smooth trowel, followed by a sprinkling of **QUARTZ 0.5** on the primer while still fresh.

Once the primer has hardened, **remove** excess sand, sandpaper the surface and remove residual dust using an industrial vacuum cleaner.

Prepare the **MAPEFLOOR CPU/MF** by carefully mixing the 3 components which make up the product for approximately 3 minutes, in order to obtain a smooth, homogenous paste.

Spread the **MAPEFLOOR CPU/MF** on the floor, taking care to distribute the product homogeneously and evenly, using a notched finishing trowel or a rake with spacers.



Mapecolor CPU/HD

Polyurethane cement-based formulate, with high mechanical strength and resistance to chemicals. Applied at a thickness of from 6 to 9 mm, it is ideal for floors subject to heavy traffic, high chemical attack and subject to high thermal shock, such as storage warehouses, production facilities in the food, chemical and pharmaceutical industries.

Products required:
Mapecolor CPU/HD

Mapecolor solution

Prepare the substrate by milling and the creation of grooves close to and around the vertical areas and, if present, any drainage holes. Mark out a diagonal line on the surface of the floor to be covered, and cut along the line to a depth of approximately 2 cm. Remove residual dust with a vacuum cleaner.

Prepare the [MAPEFLOOR CPU/HD](#) by carefully mixing the product's 3 components for approximately 3 minutes, to obtain a smooth, homogenous paste. Spread the [MAPEFLOOR CPU/HD](#) on the floor, taking care to distribute the product homogeneously and evenly, using a smooth trowel.



Mapecolor I 320 SL CONCEPT

Self-levelling epoxy system with a granular effect, to create floors which are resistant to abrasion. Available in a variety of colours.

Products required:
Primer SN
Mapecolor Paste
Mapecolor I 320 SL CONCEPT
Quartz 0.5

Mapecolor solution

Prepare the substrate by grinding or shot blasting, to guarantee the best performance from the [MAPEFLOOR I 320 SL CONCEPT](#) epoxy system. Any defects present, such as holes, pitting, cracking, etc. must be repaired beforehand using either [EPORIP](#) or [PRIMER SN](#), according to the width and depth of the defects and cracks. Where required, consolidation operations must be carried out using [PRIMER MF](#) or [PRIMER EP](#). If there are either large hollows or highly deteriorated areas present, they must be repaired using [MAPEFLOOR EP19](#), or with one of the products from the [MAPEGROUT](#) range (e.g. [MAPEGROUT SV](#)).

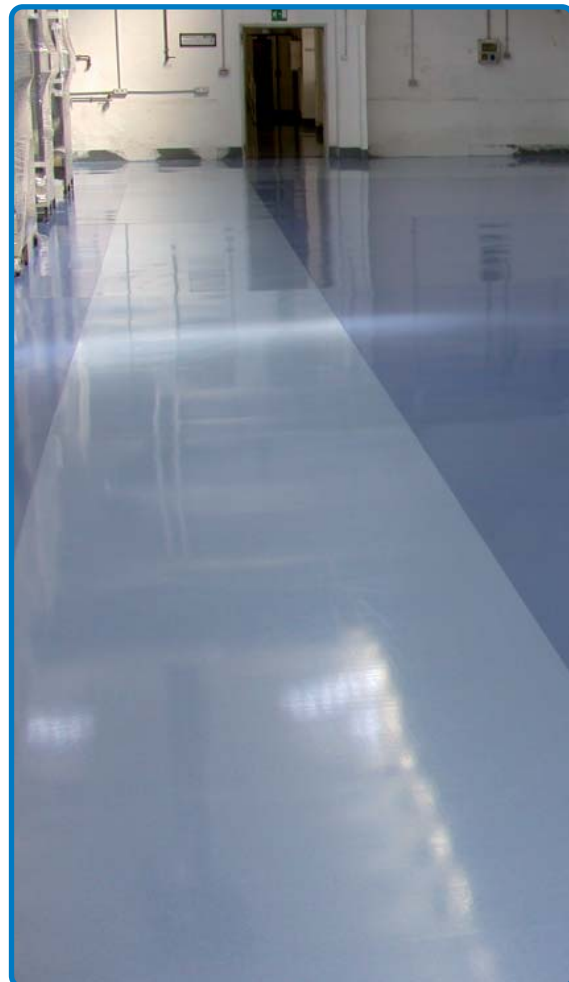
Spread the first coat of [PRIMER SN](#) mixed with 4 kg of [QUARTZ 0.5](#) on the substrate. Pour the product as mixed on the floor to be covered, and spread it out evenly using either a finishing trowel or a smooth rake. While the product is still fresh, fully sprinkle on a layer of [QUARTZ 0.5](#).

Remove excess quartz. Once the [PRIMER SN](#) has hardened, remove the excess sand and all residual dust with a vacuum cleaner.

Spread on the second coat of [PRIMER SN](#) with [MAPECOLOR PASTE](#) admix (choose a colour similar to the final colour required). Pour the product as mixed on the floor to be dressed, and spread it out evenly using either a finishing trowel or a smooth rake. While the product is still fresh, apply a layer of [QUARTZ 0.5](#).

Remove excess quartz. Once the [PRIMER SN](#) has hardened, remove the excess sand and all residual dust with a vacuum cleaner.

Apply the finishing layer, by spreading on a layer of at least 2 mm of specially prepared [MAPEFLOOR I 320 SL CONCEPT](#), making sure that the product is distributed evenly and continuously using a finishing trowel.



“Natural effect” Ultratop System

Formation and repair of the functionality of floors used in industry, shopping centres and supermarkets by spreading self-levelling, abrasion-resistant, ultra fast-setting cementitious mortar at a thickness between 5 and 40 mm. The system is also suitable for creating internal cementitious floors in civil environments.

Products required:

Primer SN or **Primer G** or **Mapeprim SP**

Ultratop

Mapefloor Finish 50 or **Mapefloor Finish 52 W**

Mapelux Lucida or **Mapelux Opaca**

(Mapefloor Filler)

Mapei solution

Prepare the substrate by shot blasting or milling, and remove residual dust with a vacuum cleaner. If the substrate is damaged or cracked, it must be repaired using **EPORIP** or **EPOJET** followed by a sprinkling **QUARTZ 0.5**.

Prime concrete and/or ceramic or stone surfaces with **PRIMER SN**. If necessary, reinforce the primer with **MESH 320** (glass fibre mesh) and fully sprinkle **QUARTZ 1.2** on the primer while it is still “fresh”. After application, leave the Primer SN to dry for 12-24 hours, according to the surrounding temperature. Before casting the **ULTRATOP**, remove excess sand with a vacuum cleaner.

In alternative to **PRIMER SN**, absorbent concrete substrates may be primed with 2-3 coats of **PRIMER G**: dilute the first coat with water at a ratio of 1:1 and the second and third coats at a ratio of 1:1 to 1:2 (according to the absorbency of the substrate). Surfaces which are not absorbent, such as ceramic or natural stone, may be treated with a coat of **MAPEPRIM SP** after cleaning the surface with a suitable detergent and abrading it mechanically, such as by grinding. Spread on the **ULTRATOP** before the **MAPEPRIM SP** has completely hardened.

Spread the **ULTRATOP**, preferably blended using a worm-screw mixer, and then level off with a metal trowel or smooth rake.

Apply a coat of **MAPEFLOOR FINISH 50** using a short-haired roller, such as mohair, making sure that the roller strokes criss-cross over each other to obtain a defect-free surface. **MAPEFLOOR FINISH 50** gives a wet-look finish to the floor. If the colour of the floor needs to remain the same, use **MAPEFLOOR FINISH 52 W**.

If a slightly non-slip finish is required on the surface of the floor, 3-5% by weight of **MAPEFLOOR FILLER** may be added to the **MAPEFLOOR FINISH 50** and **MAPEFLOOR FINISH 52 W**.

We recommend that **MAPEFLOOR FINISH 52 W** is not mixed with **MAPEFLOOR FILLER** if **ULTRATOP** is in a dark colour. For civil applications, wax the surface using a metallic wax such as **MAPELUX LUCIDA** or **MAPELUX OPACA** after the finishing treatment.



10

“Polished effect” Ultratop System

Formation of polished floors, by spreading self-levelling, ultra fast-setting cementitious mortar in civil environments, such as showrooms, shops, restaurants, apartments and shopping centres. The system guarantees perfectly flat, smooth, light-reflecting surfaces.

Products required:

Primer SN or **Primer G** or **Mapeprim SP**

Ultratop

Ultratop Stucco

Keraseal or **Mapefloor Finish 50** or **Mapefloor Finish 52 W**

Mapelux Lucida or **Mapelux Opaca**

Mapei solution

Prepare the substrate by shot blasting or milling, and remove residual dust with a vacuum cleaner. If the substrate is damaged or cracked, it must be repaired using **EPORIP** or **EPOJET** followed by a sprinkling **QUARTZ 0.5**.

Prime concrete and/or ceramic or stone surfaces with **PRIMER SN**. If necessary, reinforce the primer with **MESH 320** (glass fibre mesh) and fully sprinkle **QUARTZ 1.2** on the primer while it is still “fresh”. After application, leave the **PRIMER SN** to dry for 12-24 hours, according to the surrounding temperature. Before casting the **ULTRATOP**, remove excess sand with a vacuum cleaner. In alternative to **PRIMER SN**, absorbent concrete substrates may be primed with 2-3 coats of **PRIMER G**: dilute the first coat with water at a ratio of 1:1 and the second and third coats at a ratio of 1:1 to 1:2 (according to the absorbency of the substrate). Surfaces which are not absorbent, such as ceramic or natural stone, may be treated with a coat of **MAPEPRIM SP** after cleaning the surface with a suitable detergent and abrading it mechanically, such as by grinding. Spread on the **ULTRATOP** before the **MAPEPRIM SP** has completely hardened.

Spread the **ULTRATOP**, preferably blended using a worm-screw mixer, and then level off with a metal trowel or smooth rake.

Dry polish the surface (approximately 2 or 3 days after applying the **ULTRATOP**) using diamond disks. The formation of surface micro-porosity after the first phases of the treatment must be grouted using **ULTRATOP STUCCO**. Wait until the **ULTRATOP STUCCO** is completely dry (approximately 24 hours) before completing the polishing operations.

Apply two coats of **KERASEAL** transparent, protective impregnating finish using a clean cloth. As an alternative, **MAPEFLOOR FINISH 52 W** or **MAPEFLOOR FINISH 50** may be used.

MAPEFLOOR FINISH 52 W has the property of maintaining the colour of the floor, while **MAPEFLOOR FINISH 50** gives the surface a wet-look finish. For civil applications subject to pedestrian traffic, we recommend using **KERASEAL**. Wax the surface using a metallic wax such as **MAPELUX LUCIDA** or **MAPELUX OPACA** after the finishing treatment.

Since **MAPEFLOOR FINISH 52 W** and **MAPEFLOOR FINISH 50** leave a matt finish on the surface, the polishing treatment may be reduced to just a few strokes.



“Terrazzo alla Veneziana effect” Ultratop System

Formation of polished “Terrazzo alla Veneziana” type floors, by spreading on a layer between 15 and 40 mm of self-levelling, ultra fast-setting cementitious mortar mixed with **DYNASTONE COLOR** artificial, coloured cementitious aggregates or natural aggregates in civil environments, such as shopping centres, showrooms, schools, museums, theatres, shops, offices, apartments, etc.

Products required:

Primer SN or **Primer G**

Ultratop

Ultratop Stucco

Dynastone Color

Keraseal

Mapelux Lucida or **Mapelux Opaca**

Mapei solution

Prepare the substrate by shot blasting or milling, and remove residual dust with a vacuum cleaner.

If the substrate is damaged or cracked, it must be repaired using **EPORIP** or **EPOJET** followed by a sprinkling **QUARTZ 0.5**.

Prime concrete and/or ceramic or stone surfaces with **PRIMER SN**. If necessary, reinforce the primer with **MESH 320** (glass fibre mesh) and fully sprinkle **QUARTZ 1.2** on the primer while it is still “fresh”. After application, leave the **PRIMER SN** to dry for 12-24 hours, according to the surrounding temperature. Before casting the **ULTRATOP**, remove excess sand with a vacuum cleaner.

In alternative to **PRIMER SN**, absorbent concrete substrates may be primed with 2-3 coats of **PRIMER G**: the first coat diluted with water at a ratio of 1:1 and the second and third coats (according to the absorbency of the substrate) at a ratio of 1:1 or 1:2.

Prepare the mix in a cement mixer with **ULTRATOP** and **DYNASTONE COLOR** aggregates at a ratio of 1 : 1 by weight, and add approximately 10% of water of the total mix weight.

Spread on the mix using a straight edge with spacers and a trowel.

We recommend applying an even layer on the surface, without hollows or defects (holes, irregularities or surface roughness).

Dry polish the surface (approximately 2 or 3 days after applying the **ULTRATOP**) using diamond disks. The formation of surface micro-porosity after the first phases of the treatment must be grouted using **ULTRATOP STUCCO**. Wait until the **ULTRATOP STUCCO** is completely dry (approximately 24 hours) before completing the polishing operations.

Apply two coats of **KERASEAL** transparent, protective impregnating finish using a clean cloth. Wax the surface using a metallic wax such as **MAPELUX LUCIDA** or **MAPELUX OPACA** after the finishing treatment with **KERASEAL**.





Pizza Box – Syracuse - Italy
Products used: MAPEFLOOR SYSTEM 33



Supermarket - Caltagirone (Catania) - Italy
Products used: MAPEFLOOR SYSTEM 33



Via Larga Shopping Centre – Boulogne - Italy
Products used: “Terrazzo effect” MAPEFLOOR SYSTEM 33



**Ipercoop Le Maioliche Shopping Centre
 Faenza (Ravenna) – Italy**
Products used: “Natural effect” ULTRATOP SYSTEM



San Patrignano Wine Cellars
Ospedaletto di Rimini (Rimini) - Italy
Products used: MAPEFLOOR CPU/HD



Divella Pasta Works - Rutigliano (Bari) - Italy
Products used: MAPEFLOOR SYSTEM 31



Auricchio Works - Pieve San Giorgio (Cremona) - Italy
Products used: MAPEFLOOR CPU/MF
MAPEFLOOR CPU/HD



Sociale Minozzo Dairy - Minozzo (Reggio Emilia)
Products used: MAPEFLOOR CPU/HD
MAPEFLEX PU45



Componenti Faist Works - Montone (Perugia) - Italy
Products used: MAPEFLOOR SYSTEM 33
MAPEFLOOR SYSTEM 34



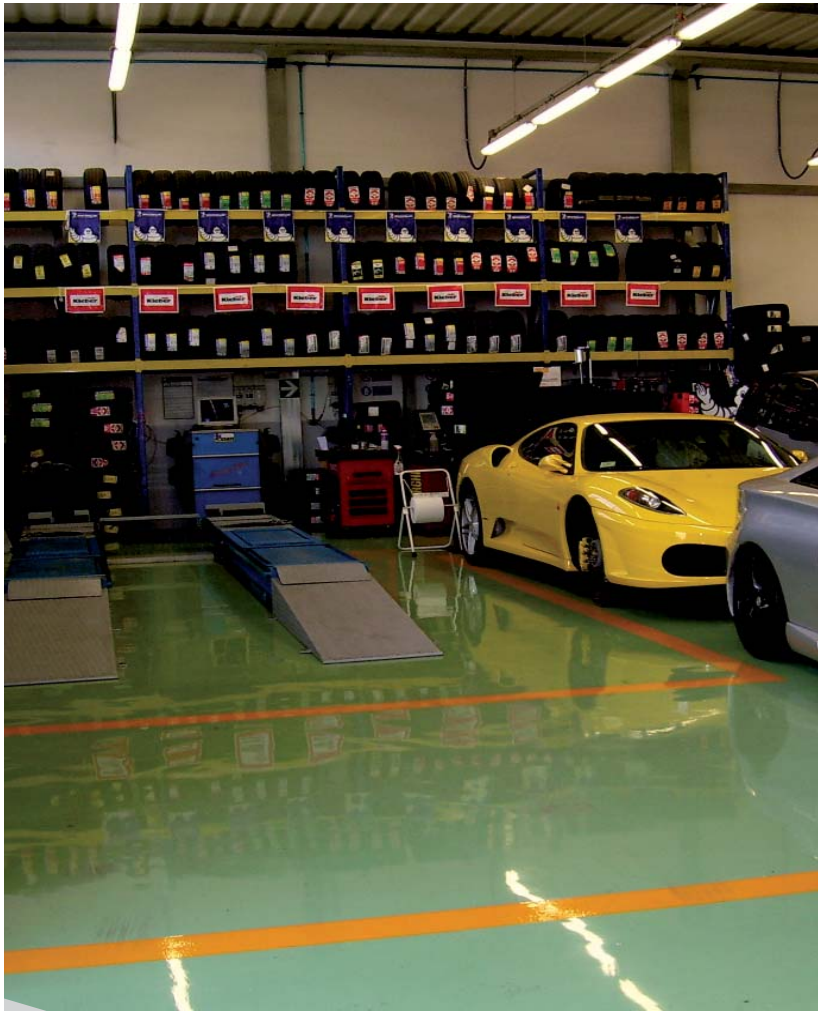
Calosci Group Tyre Centre - Agliana (Pistoia) - Italy
Products used: MAPEFLOOR SYSTEM 33



OGR Shed - Foligno (Perugia) - Italy
Products used: MAPEFLOOR SYSTEM 31
MAPEFLOOR SYSTEM 91



Salvaterra Dairy - Salvaterra (Reggio Emilia)
Products used: MAPEFLOOR CPU/HD



Diamante Body Repair Shop - Montale (Pistoia) - Italy
Products used: MAPEFLOOR SYSTEM 33



Astoria Palace - Bratislava - Slovakia
Products used: MAPEFLOOR SYSTEM 33



Barilla Pasta Mill - Parma - Italy
Products used: "Natural effect" ULTRATOP SYSTEM



Post Office - Peschiera Borromeo (Milan) - Italy
Products used: MAPEFLOOR SYSTEM 91



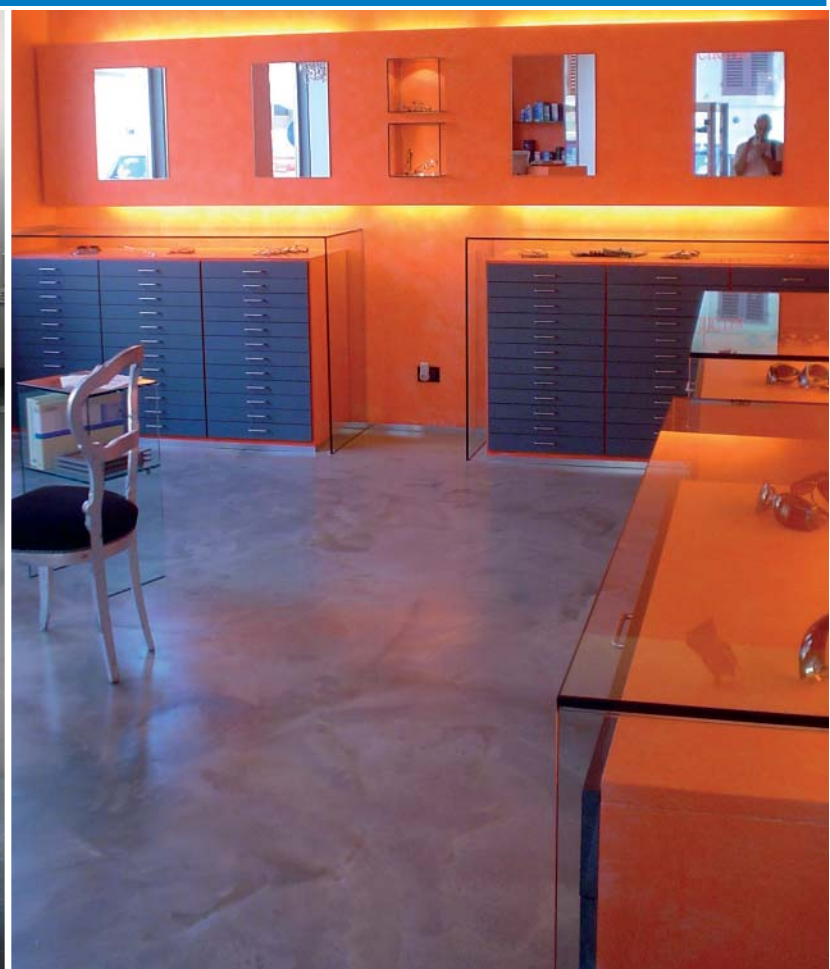
Chemists Shop - Pistoia - Italy
Products used: "Terrazzo effect" ULTRATOP SYSTEM



Virgin Sports Centre - Florence - Italy
Products used: MAPEFLOOR SYSTEM 33



Roccafiorè Wine Cellar - Catania - Italy
Products used: MAPEFLOOR SYSTEM 33



L'Otticheria Opticians - Florence - Italy
Products used: "Natural effect" ULTRATOP SYSTEM



COOP Bookshop – Ravenna – Italy
Products used: “Natural effect” ULTRATOP SYSTEM



Max Simply SMA – Rovigo – Italy
Products used: MAPEFLOOR SYSTEM 51



Hotel Les Fleurs – Sofia – Bulgaria
Products used: DECOR SYSTEM 70



Lamporecchio Theatre – Lamporecchio (Pistoia) – Italy
Products used: “Natural effect” ULTRATOP SYSTEM

COLOUR CHART

MAPECOLOR PASTE

Concentrated coloured pastes for colouring neutral base products from the **Mapecolor System**.

Note: the colours in the **Mapecolor Paste** range refer to the RAL colour chart.

							
6021 Pale Green	7001 Silver Grey	7030 Stone Grey	7032 Gravel Grey	7034 Yellowy Grey	1001 Beige	1013 Pearl White	1015 Light Ivory
							
3009 Rust Red	3016 Coral Red	5007 Sparkling Blue	5012 Shiny Blue	5024 Pastel Blue	7040 Shutter Grey	7035 Shiny Grey	7037 Powder Grey
							
6001 Emerald Green	6017 May Green	6019 Whitey Green					

MAPEFLOOR I 320 SL CONCEPT

Self-levelling, epoxy system with a granular effect,

to create floors which are resistant to abrasion. Available in a variety of colours.

Note: the colours in the **Mapecolor I 320 SL CONCEPT** range do not refer to any colour chart.

				
278 Light Blue	277 Dark Blue	280 Light Grey	279 Dark Grey	281 Red







ULTRATOP

Ultra-fast setting, self-levelling mortar based on special hydraulic binders

for abrasion-resistant floorings at a thickness from 5 to 40 mm.

Note: the colours in the **Ultratop** range do not refer to any colour chart.

Because of the cementitious nature of the product, the final colour may not be uniform.







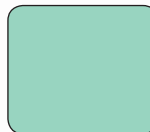
					
White	Light Grey	Standard	Beige	Rust Red	Anthracite

DYNASTONE COLOR

Coloured cementitious aggregates used for decorating floors and for elements used in urban design.

Note: the colours in the **Dynastone Color** aggregates range do not refer to any colour chart.

Because of the cementitious nature of the product, the final colour may not be uniform.

						
White	Yellow	Orange	Red	Brown	Blu	Green

Note: the colours indicated in the four colour charts are purely representative and may vary due to printing limitations



MAPEI Spa

Via Cafiero, 22 - 20158 Milan (Italy)

Tel. +39 02 37673.1

Fax +39 02 37673.214

Internet: www.mapei.com

E-mail: mapei@mapei.it